

# HE PUNA WAI

Hi I'm Ian the  
Inanga

I'm Koro the  
Kokopu

Mahia Wai  
looking after water

# Whakaaro Wai

## Reflect on your learning



- What interested you about stormwater? Wastewater? And drinking water?
- Are your local streams filled with life? Do they look clean and clear?
- What were your initial predictions and ideas about water in New Plymouth?
- What new understandings and skills have you gained during the learning inquiry?
- How can you share your new knowledge with others? Create a blog/ newsletter/ presentation or webpage about your inquiry findings. Emphasise what people can do to help water during your sharing.

# Mahia Wai

## Acting for water

How are you motivated to make a difference?

How are you currently using water? Does this need to change?

During the learning inquiry we also discovered that New Plymouth District residents generally use more water than other New Zealanders. What can you do about this?

What did you find out about stormwater? What pollutants are getting into streams?

What problems have you encountered with wastewater?

# Mahia Wai some examples



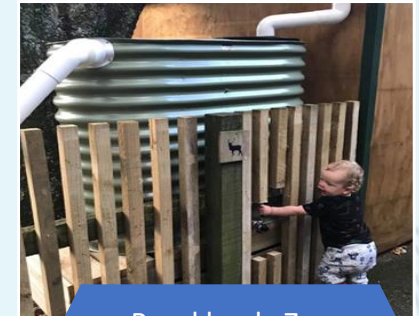
Monitoring Fish



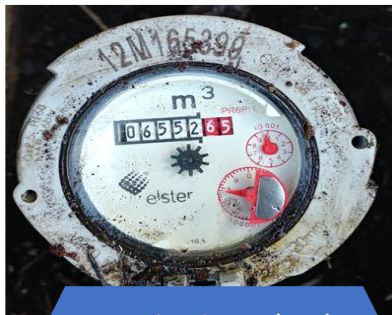
Riparian Planting  
Waitara



Stormwater  
Education Urenui  
School



Brooklands Zoo  
Rainwater Tank



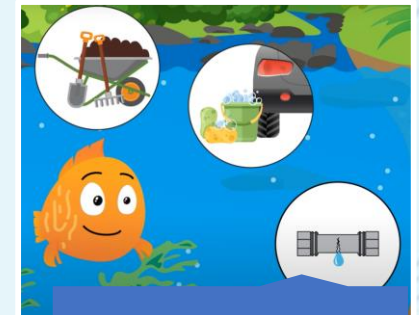
Monitoring school  
water usage



Educating the community  
about stormwater pollution



Preventing Wastewater  
Blockages



Water conservation

Thanks for  
joining us today!



Three  
Waters  
Education