



Feedback

Here is your chance to tell us what you think.

Refer to the following link to provide feedback:

<https://districtplan.npdc.govt.nz/eplan>

Open Days

Please come to an open day at the following locations:

New Plymouth Downtown Plaza, Devon St West

Wednesday, 14 February between 9am and 4pm.

Inglewood Library and Service Centre, 46 Rata Street, Inglewood

Monday, 19 February between 10am and 1.30pm.

Oakura Hall

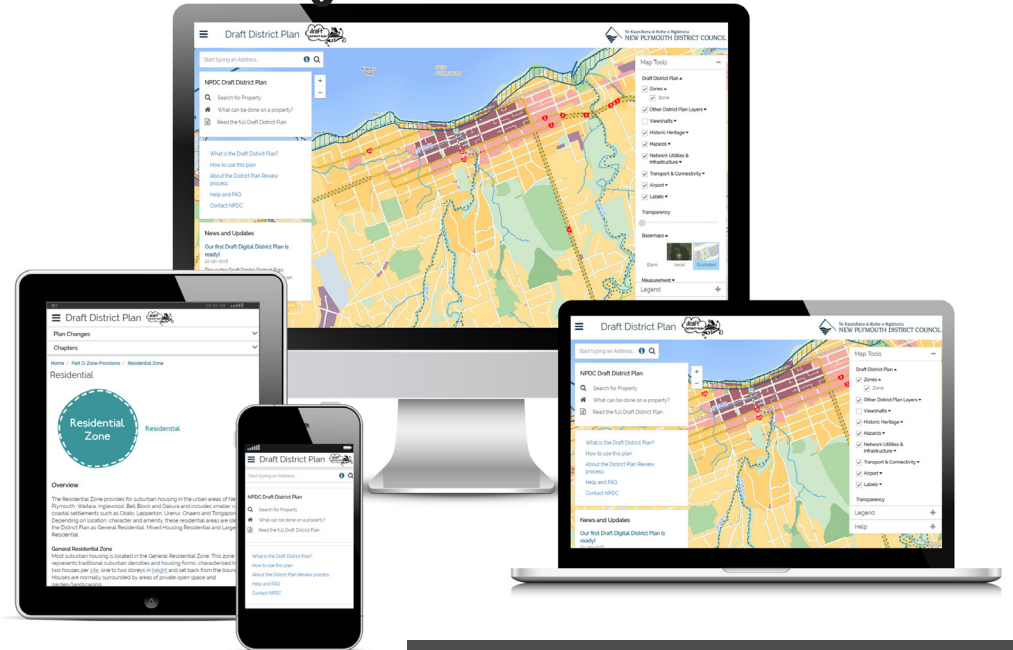
Wednesday 21 February between 12 noon and 3pm

Waitara Library and Service Centre, Queen Street, Waitara

Thursday, 22 February between 10am and 1.30pm

For your convenience, please book a time with NPDC.

Phone 06-759 6060 or email enquiries@npdc.govt.nz.



Know your plan?

We have built a new Draft Digital District Plan. The plan will determine what can be built and where. The plan helps you decide where to build a house, or where you can do business. It will also help manage some parts of the natural environment.

For the first time the plan will be digital to make it more accessible and easier for people to find planning information. We want to test how we are making it available so you can know what zone and planning rules we are considering for your property.

Know your zone

Type in your address and you will be able to find what planning rules apply to your property. Go to <https://districtplan.npdc.govt.nz/eplan> and follow these simple steps to know your zone.

What is my zone?

Type in a property address



What can I do on my property?

Find your zone rules



Good to go

May require resource consent

Resource consent needed

Do I have something special I need to look after?

Find other features on your property



What do I think?

Come and talk to us and provide your feedback



- I can now find planning information in a few clicks
- I know what I can do on my property easily
- I can give feedback on the planning provisions

Do you know?

Refer to our separate flyers for more information on these 'Knows'.



The new plan will provide more certainty to local businesses and potential investors about where they can locate. This will make it easy to do business here. Businesses will know the planning issues upfront so that informed investment decisions can be made.

Where to do business



We are a growing community and it is important that we provide opportunities for housing in the district. We will allow for different types of housing within our existing urban areas and also identify areas for future urban development.

Where we are growing



We have an ever-changing coastline, with some parts of the coast more affected than others by change. We have updated coastal information that we can share with you. We intend to manage coastal activities so that natural values are not affected and the risks, e.g. from coastal erosion and coastal flooding are minimised.

Our coastal story