




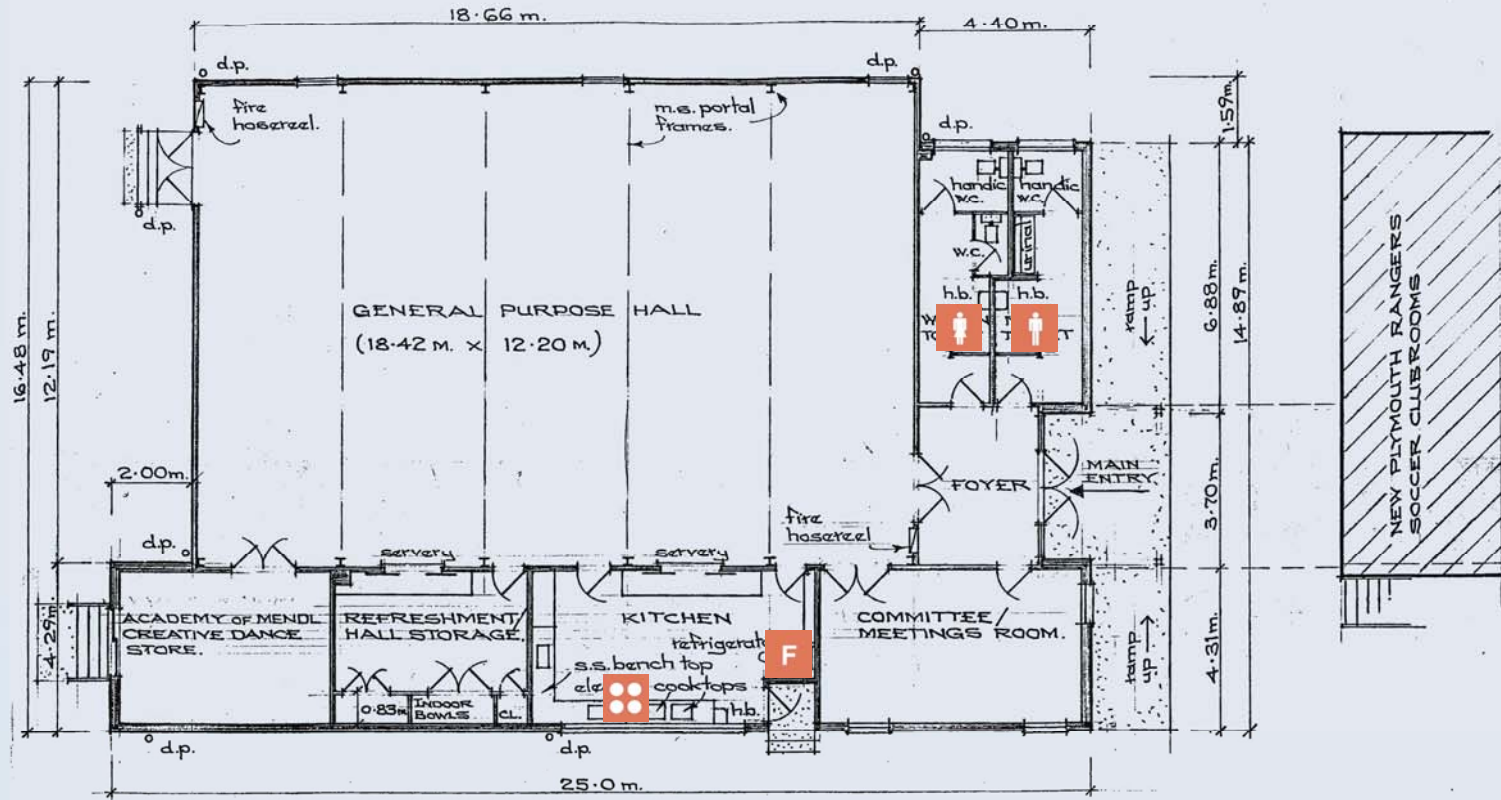


# Merrilands Domain Hall

## FLOORPLAN

### KEY:

-  Stove
-  Fridge
-  Toilets
-  Heating
-  Disabled Access



### HALL BUILDING & ROOM FLOOR AREAS

- TOTAL BUILDING AREA ..... 375.8 m <sup>2</sup> (incl. DANCE STORE)	
- GEN. PURPOSE HALL .....	224.7 m <sup>2</sup>
- WOMEN TOILETS .....	13.4 m <sup>2</sup>
- MEN TOILETS .....	12.4 m <sup>2</sup>
- ENTRY FOYER .....	12.3 m <sup>2</sup>
- COMMITTEE/MEETINGS RM. ....	25.3 m <sup>2</sup>
- HALL KITCHEN .....	26.6 m <sup>2</sup>
- REFRESH./HALL STORAGE .....	18.7 m <sup>2</sup>
- ACADEMY OF CREATIVE DANCE STORE .....	20.2 m <sup>2</sup>

For more information:  
Phone 759 6060