

This easy-to-follow guide will help you meet your regulatory requirements to keep sediment and surface water controlled on-site during construction.

If you have any questions or would like advice that is specific to your worksite, please contact us at NPDC - we're happy to help.



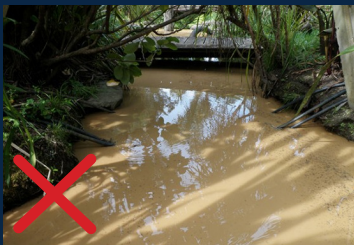
The site needs a dedicated wash-down area away from drains



Keep silt away from stormwater drains.



A stabilised entranceway is required.



Prevent soil, water and building wastes from entering streams.

CHECK YOUR SITE IS WORK-READY

Entranceway is stabilised

Diversion/barriers installed:

Sediment fences/green buffer

Diversion bunds

Channels/swales

Drainage managed:

From site

From driveway/hard surfaces

From roof

Dust and soil nuisance managed:

Dust control

Hydro-seed/grass/topsoil

Facing/retaining wall/matting

General site housekeeping:

Wash-down area (protect sumps)

Road sweeping

Stockpile and cover soil

Cover skip

CONTACT

☎ 06-759 6060

✉ enquiries@npdc.govt.nz

📍 84 Liardet Street, New Plymouth 4310

🌐 www.newplymouthnz.com

📘 NewPlymouthDistrictCouncil

🐦 NPDCouncil

📱 NP in Your Pocket app

A GUIDE TO SEDIMENT CONTROL ON BUILDING SITES



SEDIMENT CONTROL ON SMALL BUILDING SITES

WHAT YOU NEED TO DO



STOCKPILE

Store earth from trenches and excavations away from low points, run-off channels and kerbs, and always within the silt fencing. Cover with tarpaulins or mulch to minimise sediment washing or blowing away.

INSTALL SPOUTING AND DOWNPIPES ASAP

Temporary pipes to divert clean water, i.e. from the roof. Use solid nova coil or temporary plastic downpipe to direct to a soak hole or a stable area.

DIVERT CLEAN WATER

Direct any surface water away from the site by building earth bunds.

STABILISE THE ENTRANCEWAY

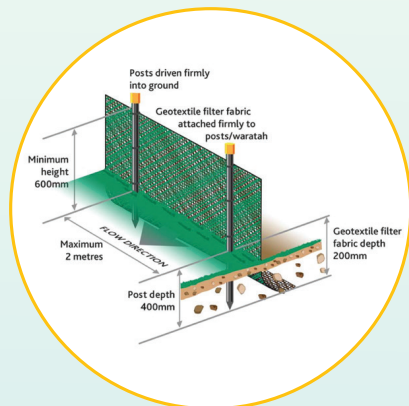
A compacted metal entranceway to the site should be the first works to occur. The footpath must remain clear at all times. Stabilised entrance should be to the garage door opening and 4m wide, with aggregate to a depth of 150mm.

KEEP A GREEN BUFFER

Where possible, leave a grassy strip between the property and kerb. This will act as a further filter and help reduce sediment reaching the kerb and going down the cesspit.

BUILD A SILT FENCE

All sediment must be contained on-site. Embed fencing by 200mm, with 600mm above-ground. Place stakes every 2m.



A WASH-OUT AREA

Set up a signposted dedicated wash area away from drainage lines and cesspits. Scrape excess concrete into waste bin before washing tools.

PROTECT WATERWAYS

Ensure there is a buffer to stop sediment reaching streams, rivers and lakes.

COVER THE SKIP

Cover waste containers, such as skips and bins, to stop rubbish being blown off-site. Cover from rain to prevent more liquid waste.

ROAD SWEEPING

Any site sediment reaching the road must be cleaned up as soon as possible and not be allowed to enter the stormwater network. No sediment can be washed into stormwater drains. Filter cloths can be used over stormwater drains but only on a limited basis, and must be removed prior to rain falling.

