

Reading your meter

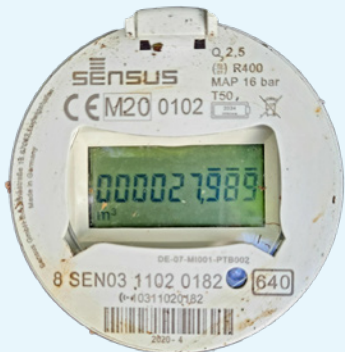


- 1 In your property berm you will find a box with a blue lid labelled WATER
- 2 Use a screwdriver to pop the blue lid to view your iPerl water meter
- 3 The meter reading is the number displayed on the dial
- 4 The digits to the left of the comma represent cubic meters (m^3 , where $1 m^3=1000$ litres)
- 5 The digits to the right of the comma represent the litres used
- 6 In the example above the meter reading is 001319,811 = 1319811 litres
- 7 NPDC only record the cubic meters in meter readings. The figure to the left of the dial ($1319 m^3$), is the figure we capture
- 8 Write down your meter reading in the evening (ensuring no water will be used overnight) and then the next morning before any water is used again.
- 9 Any increase in the reading overnight indicates water has passed through the meter and that there could be a leak on your side of the meter.

For helpful water saving tips visit our website npdc.govt.nz/water-conservation



NPDC



Reading your meter Sensus 640MC

- 1 In your property berm you will find a box with a blue lid labelled WATER
- 2 Use a screwdriver to pop the blue lid to view your 640MC water meter
- 3 The meter reading is the number displayed on the dial
- 4 The digits to the left of the comma represent cubic meters (m^3 , where $1 m^3=1000$ litres)
- 5 The digits to the right of the comma represent the litres used
- 6 In the example above, the meter reading is $000027,989 m^3 = 27989$ litres
- 7 NPDC only record the cubic meters in meter readings. The figure to the left of the dial ($27m^3$), is the figure we capture
- 8 Write down your meter reading in the evening (ensuring no water will be used overnight) and then the next morning before any water is used again.
- 9 Any increase in the reading overnight indicates water has passed through the meter and that there could be a leak on your side of the meter.

For helpful water saving tips visit our website npdc.govt.nz/water-conservation



NPDC