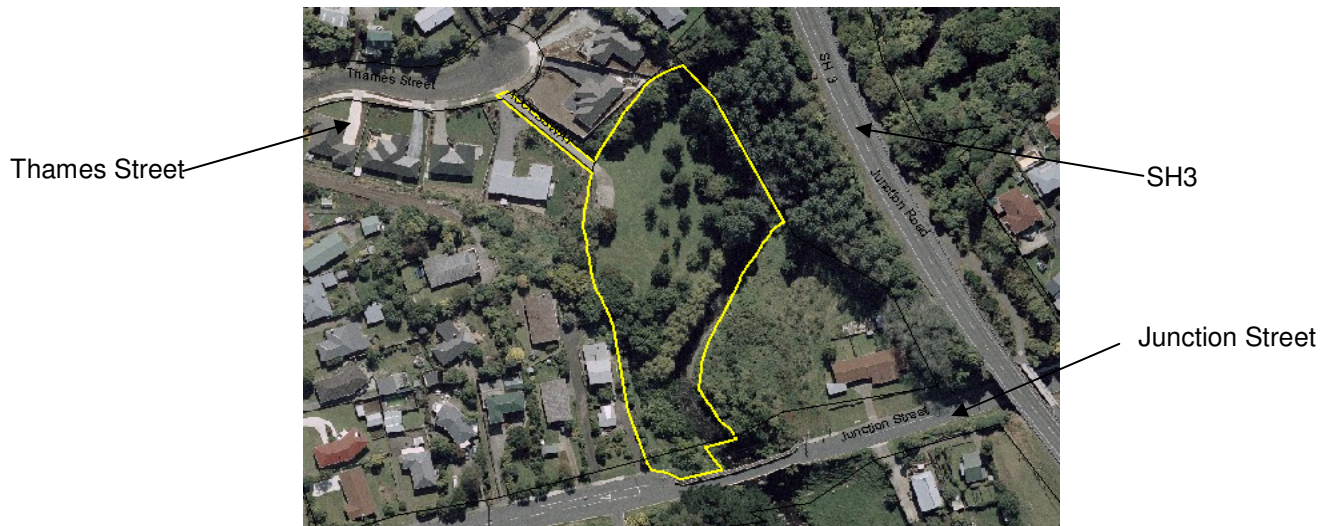


## 6.17 Junction Street Reserve

### Description

Location:	Junction Street
Legal description:	Lot 55 DP 9311, Lot 3 DP 10358 and Pt Lot 8 DP 3849
Size:	0.70 ha
Reserve status:	Reserve



### Physical description

This reserve gently slopes down towards the Te Henui stream. Access is from Thames Street as well as at a point just before the Junction Street Bridge. The reserve is dominated by well established trees, particularly at the Junction street end with large grassy areas, which are flat in places, towards the Thames Street entrance.

### Tangata whenua interest

This reserve is within the tribal rohe of Te Atiawa Iwi and Nga Mahanga a Tairi. The area is of historic and cultural significance to Ngati Te Whiti and Te Kotahitanga o Nga Mahanga a Tairi.

### Land status and history

Pt Lot 8 DP 3849 and Lot 3 DP 10358 – This land was taken by the City of New Plymouth for recreation ground under the Public Works Act in 1971.

An easement was created when the land was acquired in 1971 to allow for a right of way onto the land, the right to convey water and the right to run electricity cables and telephone cable lines.

Lot 55 DP 3911 was vested in the Taranaki County Council in 1964 pursuant to the Counties Amendment Act 1961, as reserve subject to the Reserves and Domains Act 1953.

**Existing improvements**

The only existing improvements on this reserve are well established specimen trees.

**Uses and activities**

This reserve is suitable for walking and picnicking.

**Classification**

Recreation

**Management objectives and specific policies**

- This reserve will continue to be maintained and developed as open space for casual recreation as well as a linkage from Junction St to the end of Thames St.
- Riparian planting in this reserve is considering important for the enhancement of ecological values and protection to the Te Henui Stream.

### Visual Resource Key

**Landscape/Spatial Features**

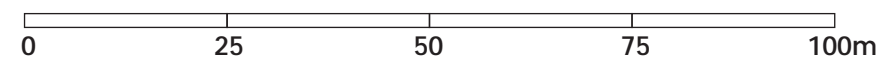
- Land Parcel
- Stream
- Mown Open Space
- Entry Points

**Vegetation**

- Existing Trees/Vegetation
- Proposed Trees/Vegetation

**Structures**

- Pedestrian Entry Sign
- Proposed Concrete Pathway



### Landscape Context Key

**Landscape Features**

- Stream

**Spatial Features**

- Reserve Land
- Surrounding Open Space/Reserves/Sports Fields

